

# BYFORD AUDIO

## CGF- 3

### 3" 2Way Frameless High Performance Fibre Glass Ceiling Speaker

Exceptional Audio Performance

#### Description

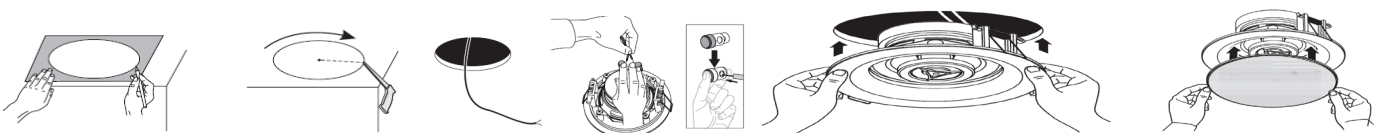
The CGF-3 is a 2-way ceiling speaker with a high quality 3" Fibre Glass woofer and a 0.5" Mylar dome tweeter in co-axial arrangement. High performance Small Aperture In-Ceiling Speaker delivers dynamic and impactful sound in a compact form factor. Small in size, it truly is a big performer! It is designed for optimal sound in a wide variety of home entertainment applications from providing relaxed background music to a high impact home theatre system. Ideal size for rear channel speaker use. This combination provides great flexibility in terms of application and suitability to different music tastes. Its frameless design makes installation easy and integrates perfectly with any decorative interior style. The appearance and neutral white colour have been selected to be unobtrusive in virtually all interiors.

#### FEATURES

- Frameless design provides reduced visibility for a clean and built-in look
- Mylar dome tweeter reproduces high frequencies with extreme accuracy
- Fibre Glass type woven cone woofer delivers realistic accurate lows
- Rubber Edge Surround: for longevity and excellent bass performance
- Spring type mounting system for a fast and easy installation
- Magnetic grill allows for easy removal and protection from elements
- Concealed magnets



Specifications	
RMS Power	20W @ 8Ω OR 5W @100V
Sensitivity(1M/1W)	82dB
Frequency Response	130Hz-20kHz
Woofer Type	3" Fibre Glass woven cone with rubber edge
Tweeter Type	0.5"(13mm) Mylar dome tweeter
Swivel Tweeter	NA
Tweeter Attenuation	NA
Crossover Slope	6dB/Octave
Dimension	Φ116X58mm
Cut-out Size	Φ100mm



Specifications are subject to be changed without notice.

