

# BYFORD AUDIO

## CGF- 6

### 6.5" 2-Way Frameless High Performance Fibre Glass Ceiling Speaker

Exceptional Audio Performance

#### Description

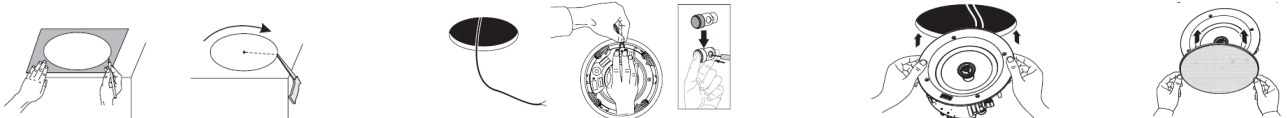
Designed to offer greater flexibility in terms of application while accommodating a wide range of music tastes; Premium fibre glass woven cone going down to 60Hz having rubber edge surround with concealed magnets offers a lifetime of listening enjoyment; Frameless design makes installation easy and matches most any décor; Micro-slim magnetic round grill offers protection from dust or damage; Pivoting 0.75" Silk dome tweeter for pristine highs and adjustment for optimum listening; Front accessible environment EQ for fine tuning to the installation environment; Dog-legs make installation fast and easy; Heavy duty terminals and quality crossover components. Widely used for Gyms, Banquets, conference rooms, high ceiling lobbies / receptions, Dolby Atmos, Dolby surround speakers & Multi room audio applications.

#### FEATURES

- Frameless design provides reduced visibility for a clean and built-in look
- Silk dome tweeter reproduces high frequencies with extreme accuracy
- Fibre Glass type woven cone woofer delivers realistic accurate lows
- Rubber Edge Surround: for longevity and excellent bass performance
- Pivoting tweeter design offers adjustment for optimum listening
- Environment equalizer ( $\pm 3\text{dB}$ ) tailors the sound to the room and listener's taste
- Dog leg mounting system for a fast and easy installation
- Magnetic grill allows for easy removal and protection from elements
- Concealed magnets



Specifications	
RMS Power	60W @ 8Ω OR 15W @100V
Sensitivity(1M/1W)	87dB
Frequency Response	60Hz-20kHz
Woofer Type	6.5" Fibre Glass woven cone with rubber edge
Tweeter Type	0.75"(20mm) Silk dome tweeter
Swivel Tweeter	Yes
Tweeter Attenuation	$\pm 3\text{dB}$
Crossover Slope	12dB/Octave
Dimension	$\Phi 227 \times 87\text{mm}$
Cut-out Size	$\Phi 210\text{mm}$



Specifications are subject to be changed without notice.

